



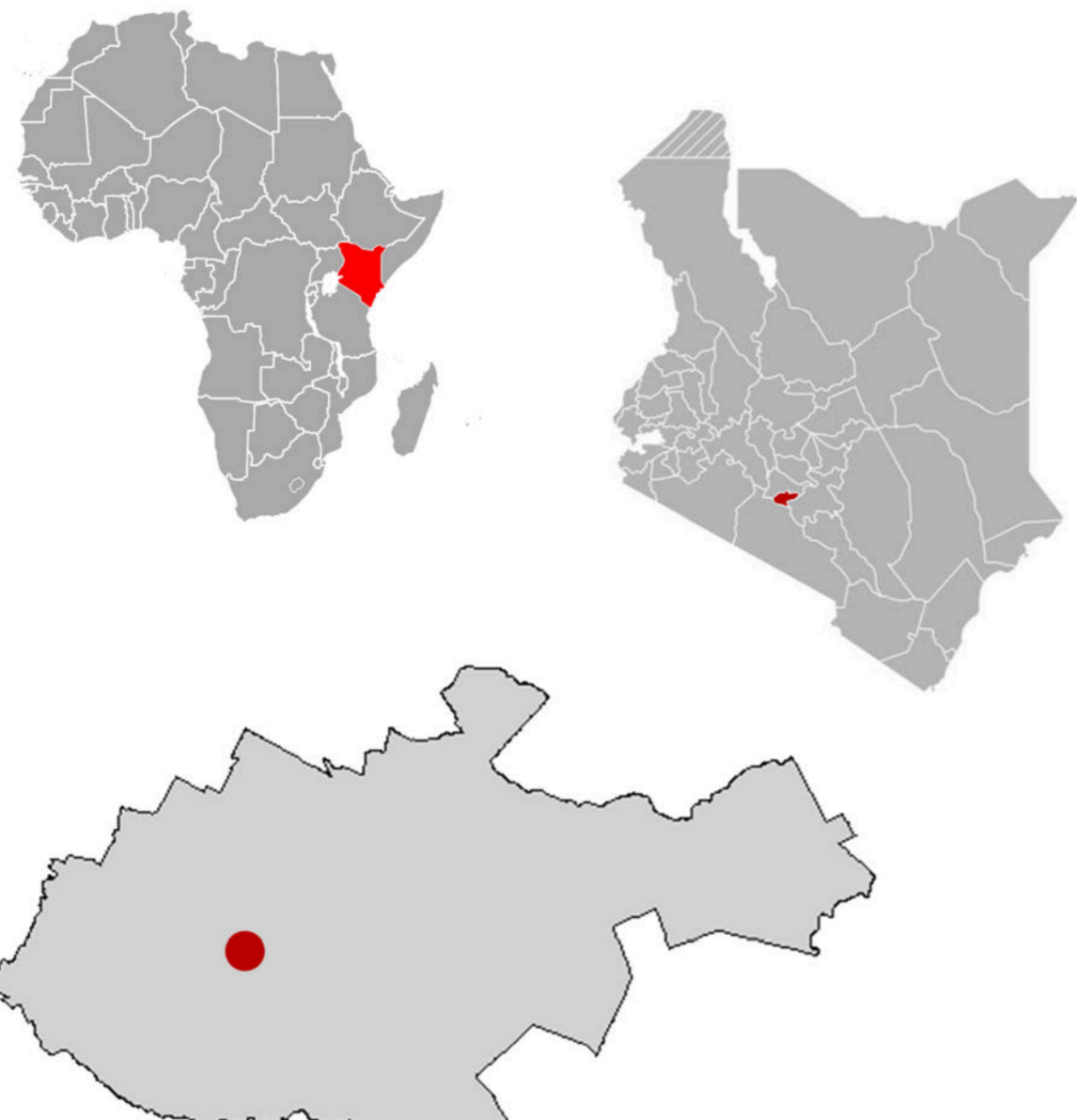
project description

Client: Aga Khan Development Network (AKDN), Foundations for Learning (F4L)
Location: Woodley, Nairobi, Kenya.
Area: 7,000 sqm
Estimated Value: Ksh 212 million
Year: 2025

This design thesis explores the disconnect between Kenya's progressive educational reforms and the current design of Nairobi's early learning spaces. By examining four distinct school archetypes through the lenses of Built Pedagogy and Cultural Landscape Theory, the research highlights how traditional, teacher-centric layouts hinder the collaborative goals of the Competency Based Education. Findings demonstrate a vital need for environments that

embrace zoned flexibility, biophilic principles, and culturally resonant materials. Ultimately, the study provides a strategic architectural framework to transform learning spaces into active partners in learning, ensuring spatial design fosters holistic development and a strong sense of cultural identity. The resultant ECD Centre is a proposed facility designed to address the developmental needs of early learners and the social needs of the surrounding community.

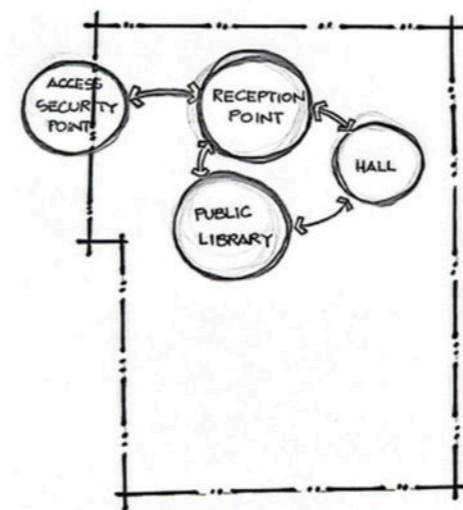
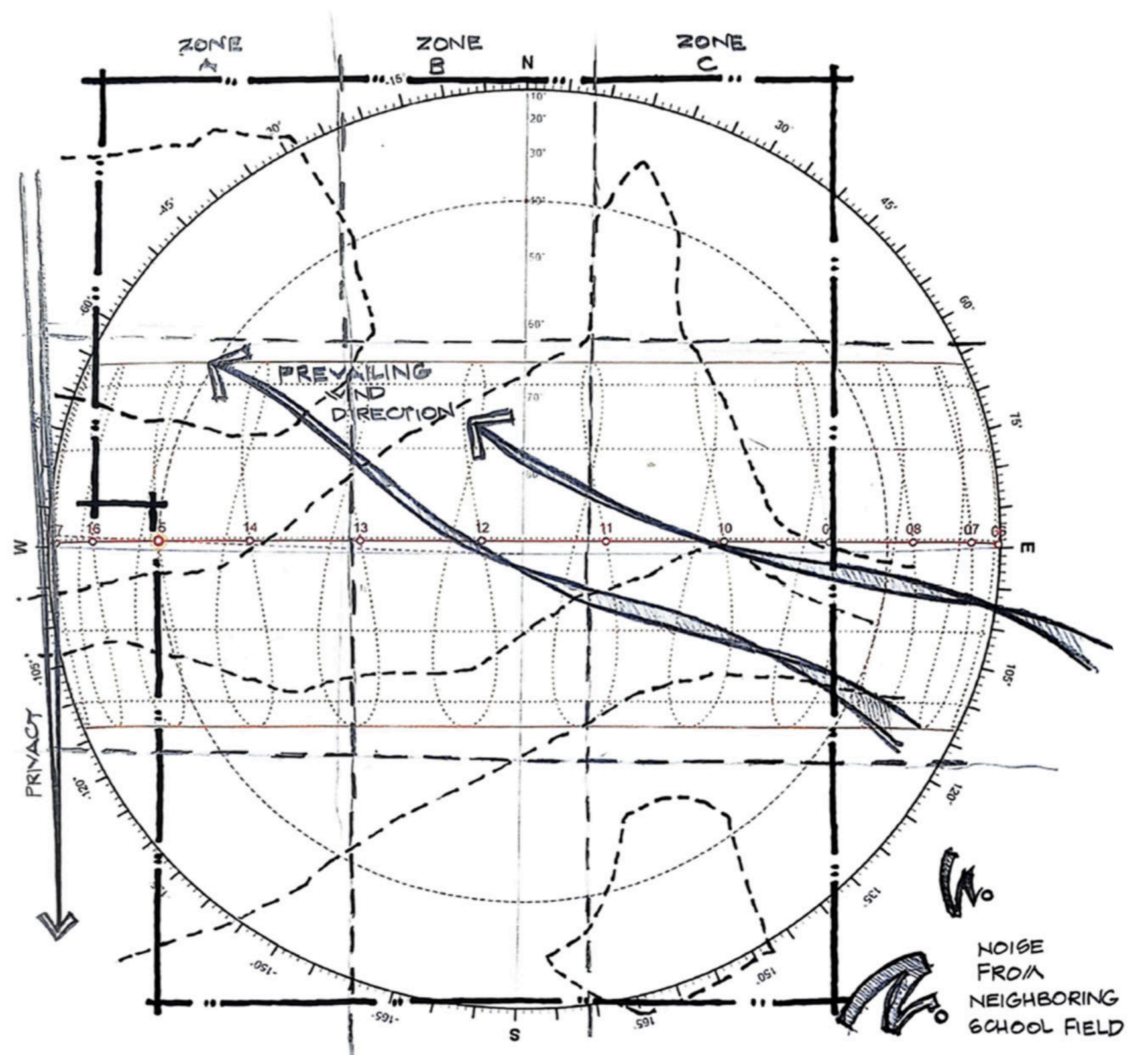
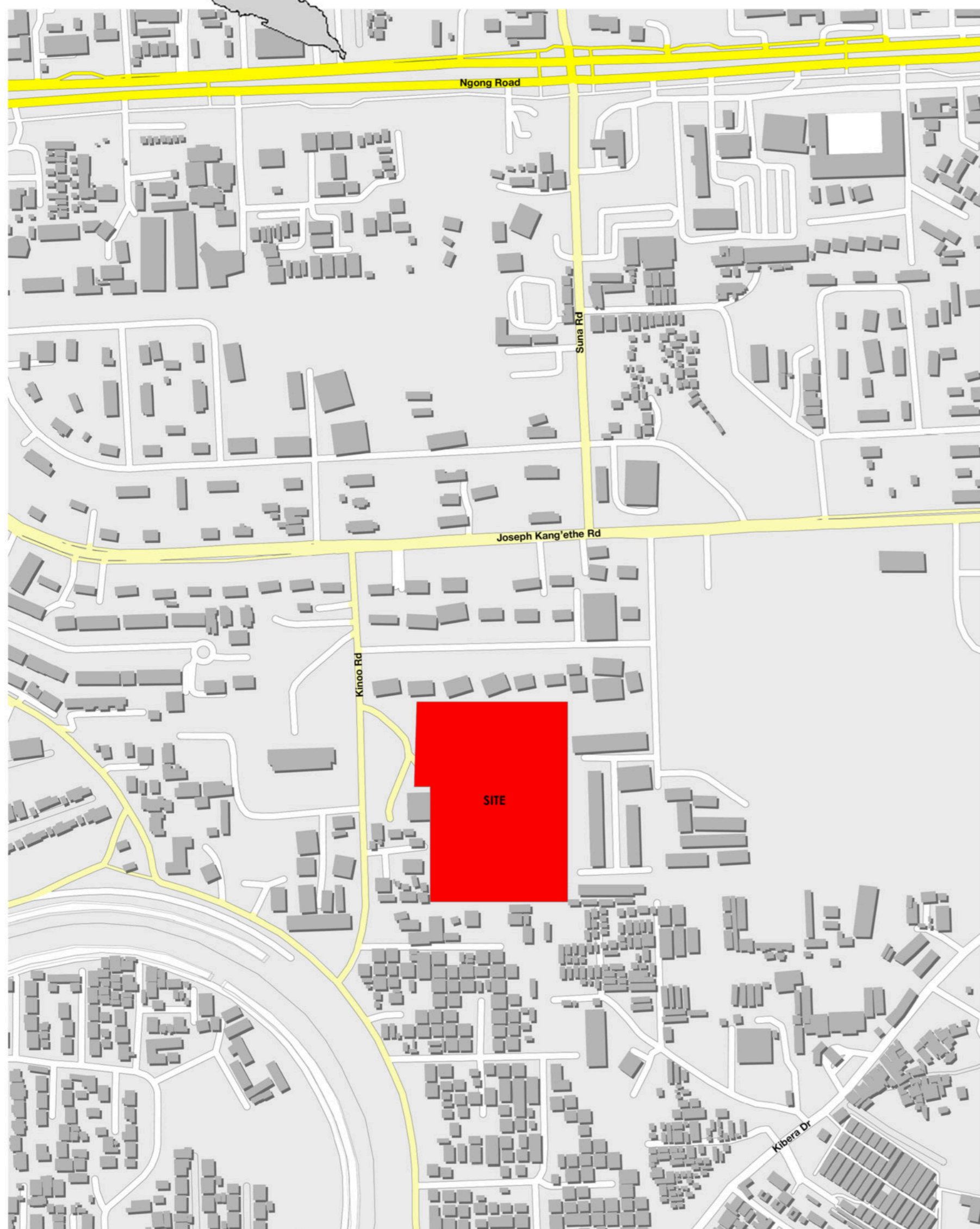
site location, access and planning



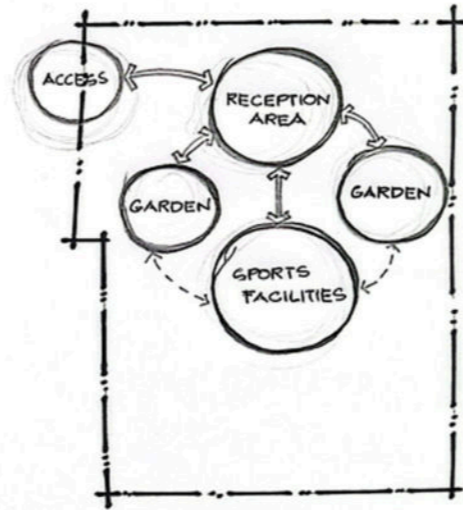
The selected site is the Joseph Kang'ethe grounds, a well-known public space located within Nairobi's Woodley estate in Kenya. It is situated approximately 6km west of Nairobi's Central Business District. The site is highly accessible, bordered by Joseph Kang'ethe Road to the south and surrounded by dense residential neighbourhoods.

The entire site covers 5.33 acres (21,600 sqm). Its approximate coordinates are 1°18'20.9"S 36°46'59.1"E.

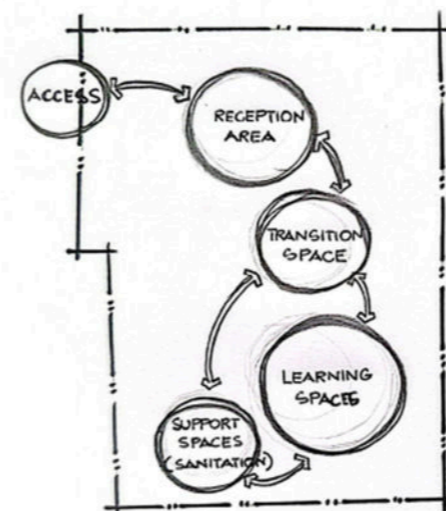
The site is bordered by dense residential estates to the North and West, Joseph Kang'ethe Road and Toi Market to the South, community facilities and residential estates to the East.



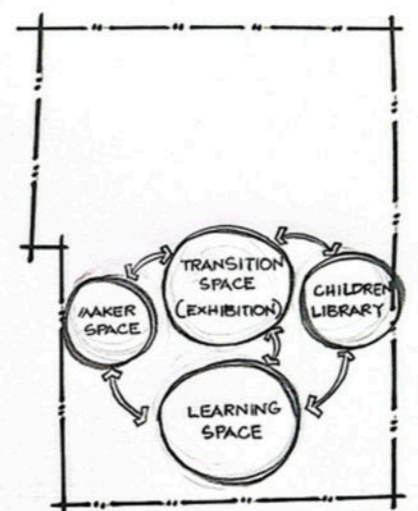
SCENARIO 1:
A community member accesses the site to use public spaces, specifically the library or hall.



SCENARIO 2:
A community member accesses the site to use the community garden, or the sports facilities on site.



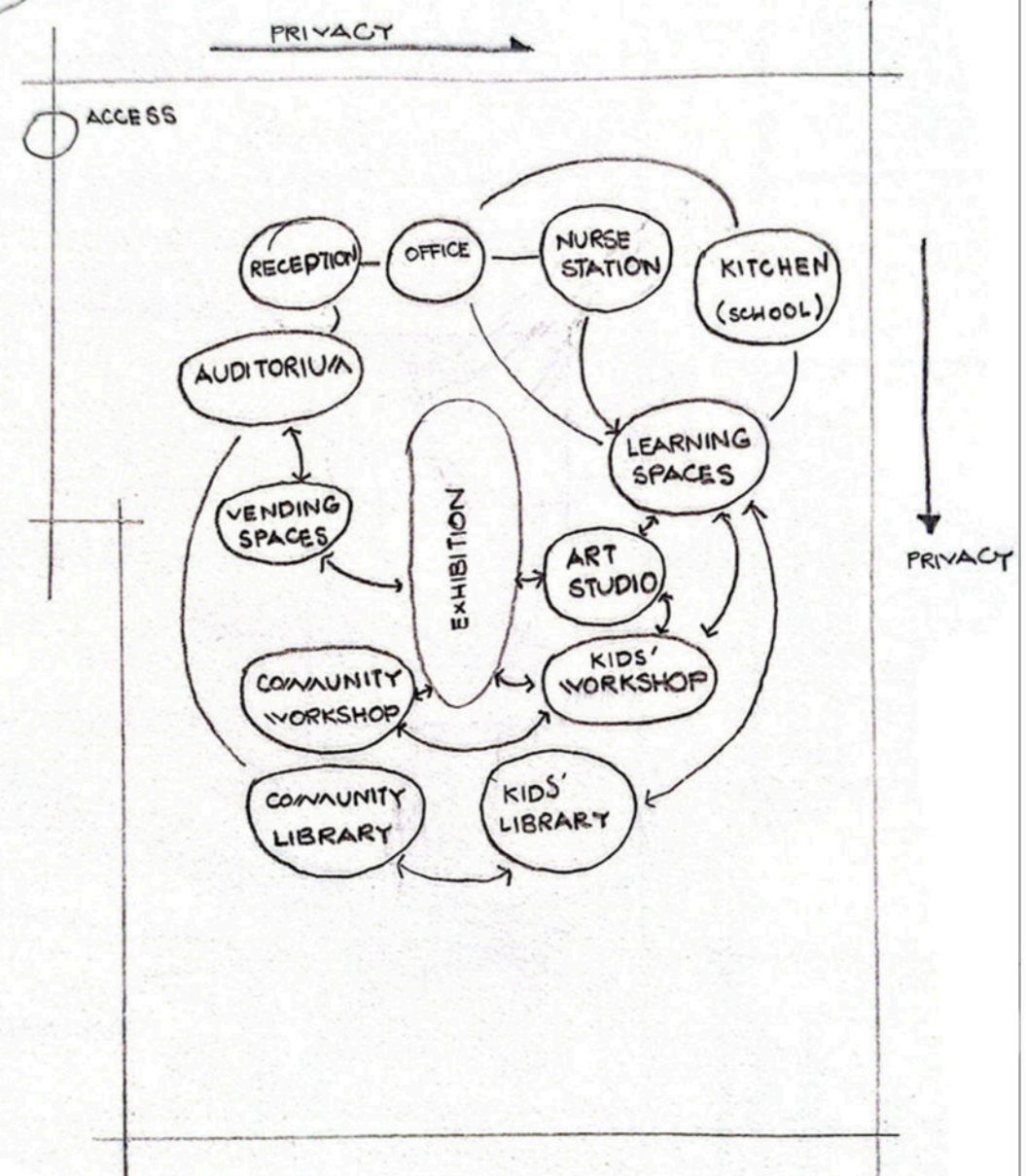
SCENARIO 1:
A parent bringing a child to site for the sole purpose of learning.
 Primary Access → Buffer Space (Reception) → Transition → Learning Spaces



SCENARIO 2:
A learner accessing their facilities.
 Learning → Transition → Target Space (Library, Workshop)

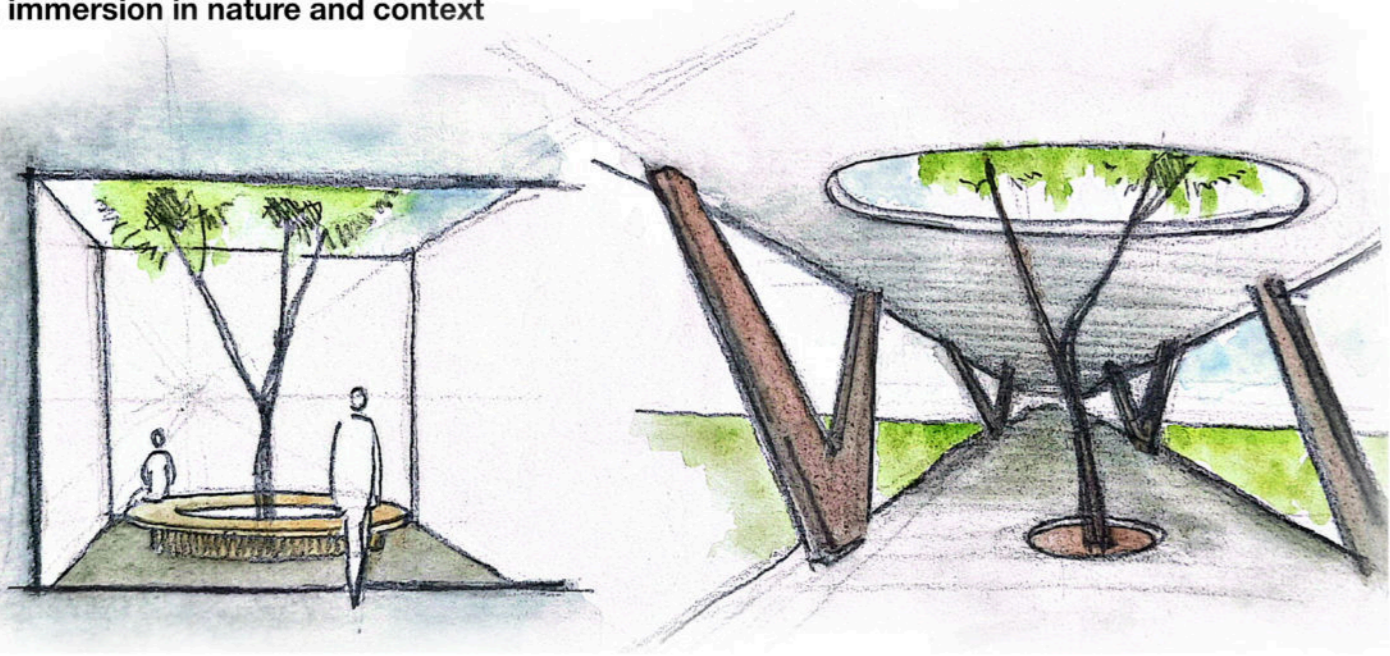
ORDER OF IMPORTANCE

PUBLIC	LEARNERS	ADMINISTRATIVE
• AUDITORIUM	• LEARNING SPACES	• OFFICES
• EXHIBITION	• ART STUDIO	• NURSE
• WORKSHOP	• PLAY AREAS	• RECEPTION
• LIBRARY		
• GARDENS		



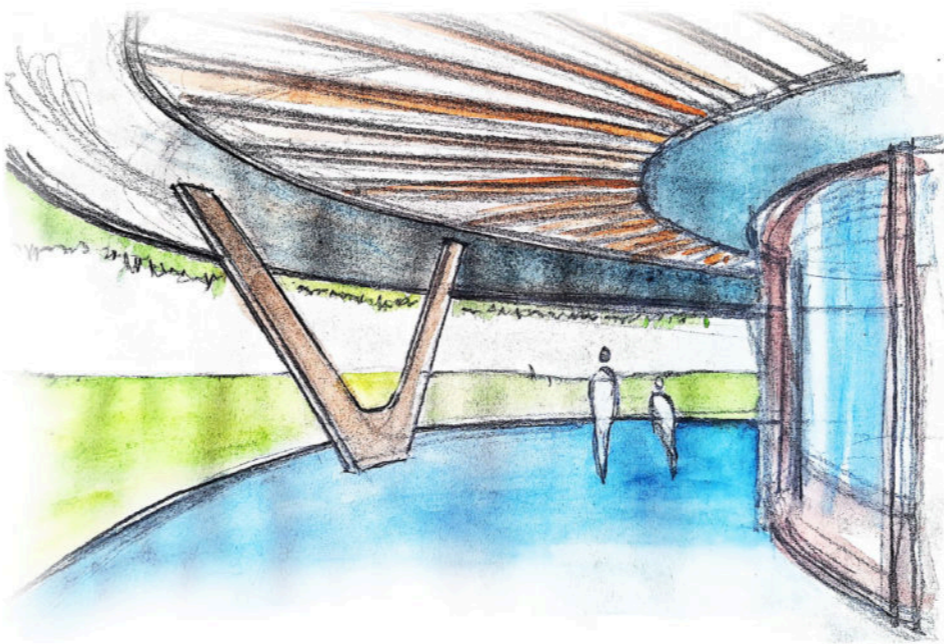
thesis recommendations explored in space

1. immersion in nature and context



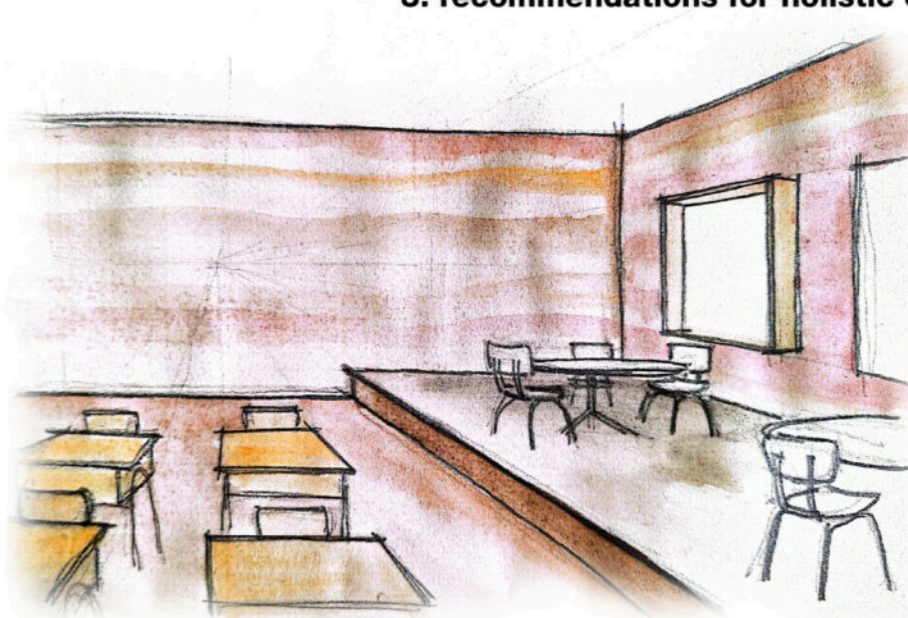
Use of design strategies that dissolve the boundaries between inside and out, treating the outdoors as an extension of the learning space.

2. recommendations for cultural resonance



Use of locally sourced, sustainable, and contextually resonant materials that reflect the local area's unique identity.

3. recommendations for holistic child development



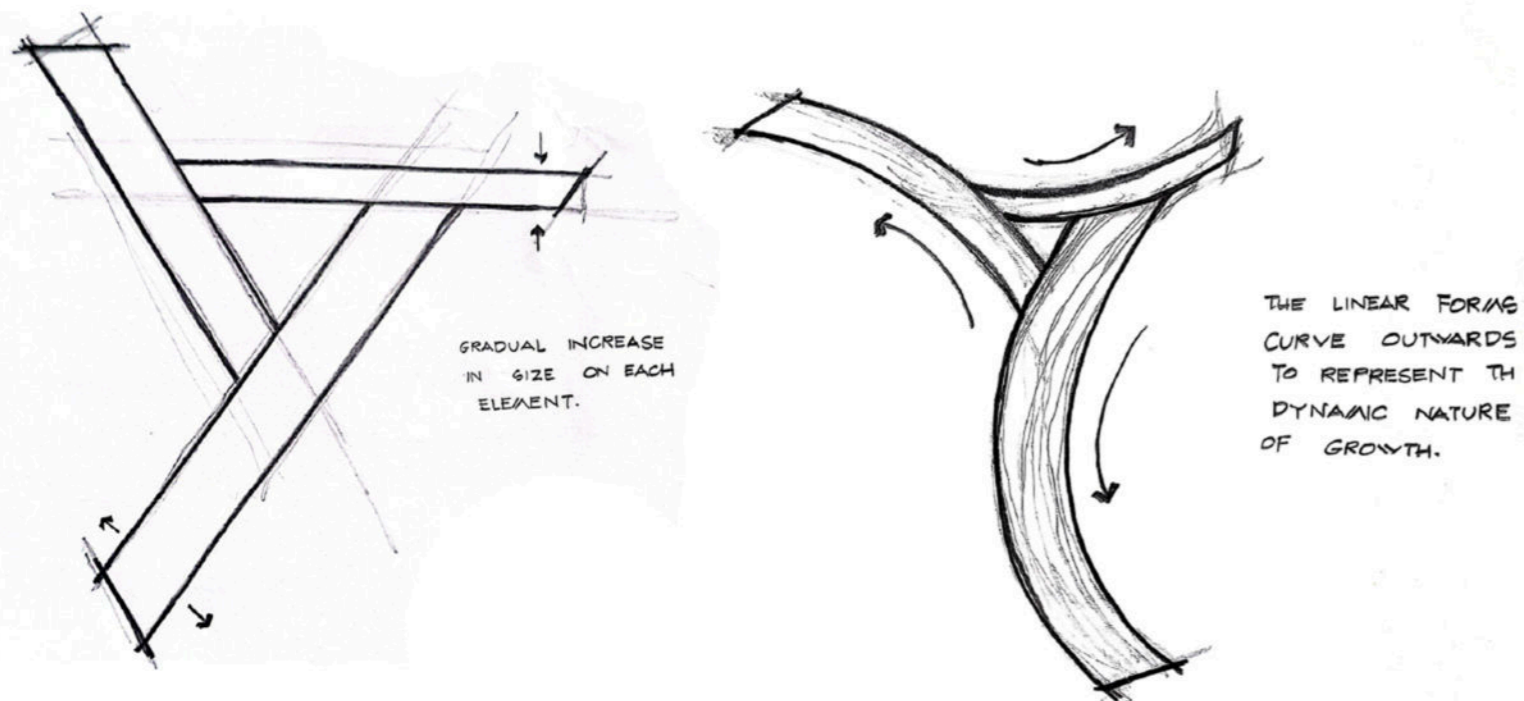
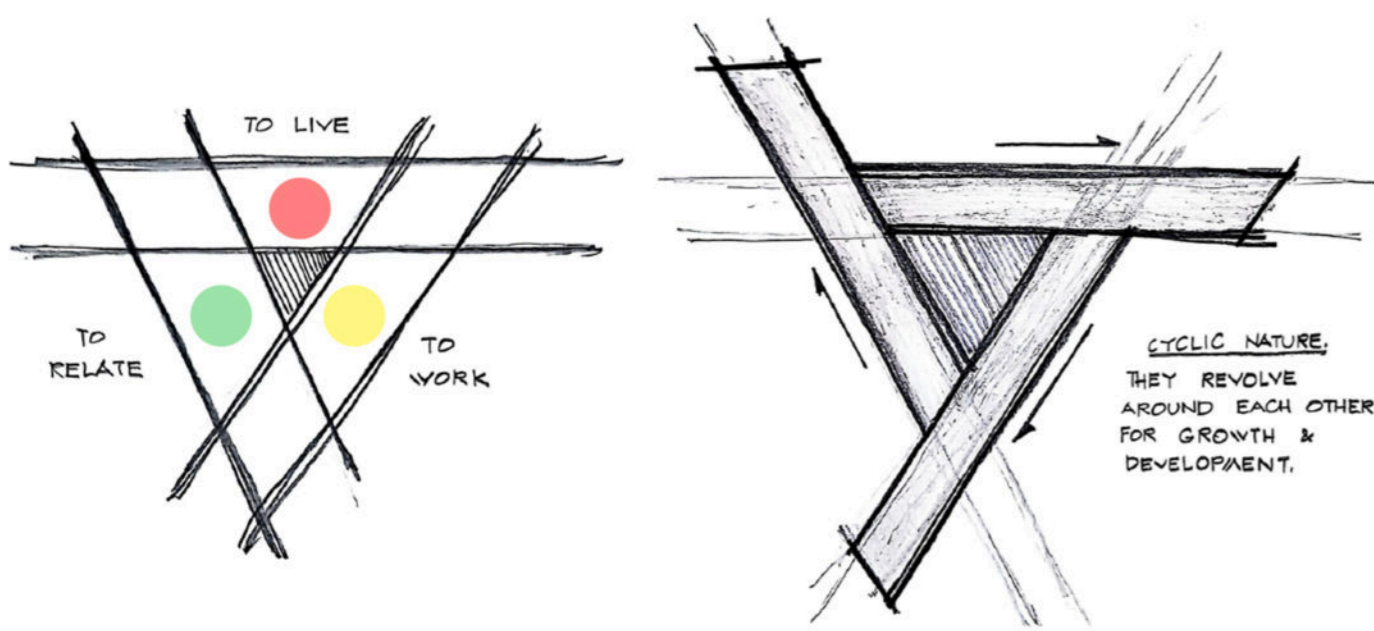
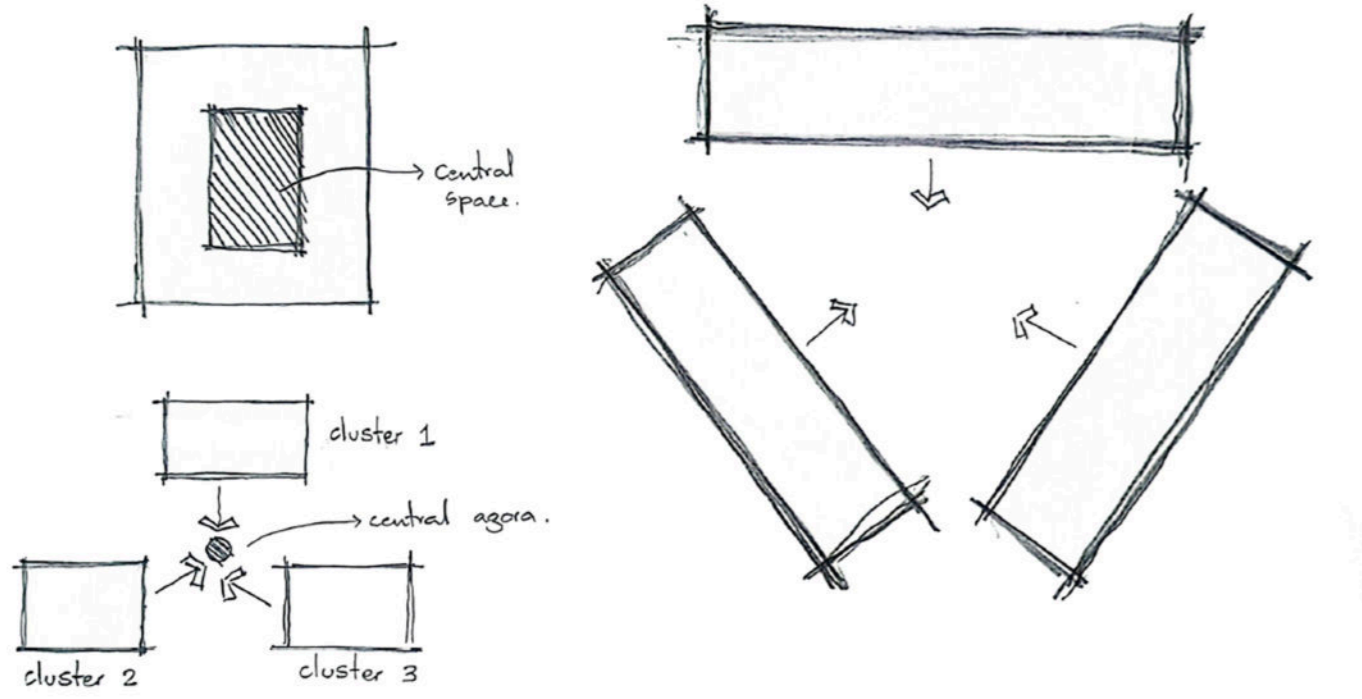
The learning spaces have distinct zones for various activities and hands-on projects set apart from the main learning zone.



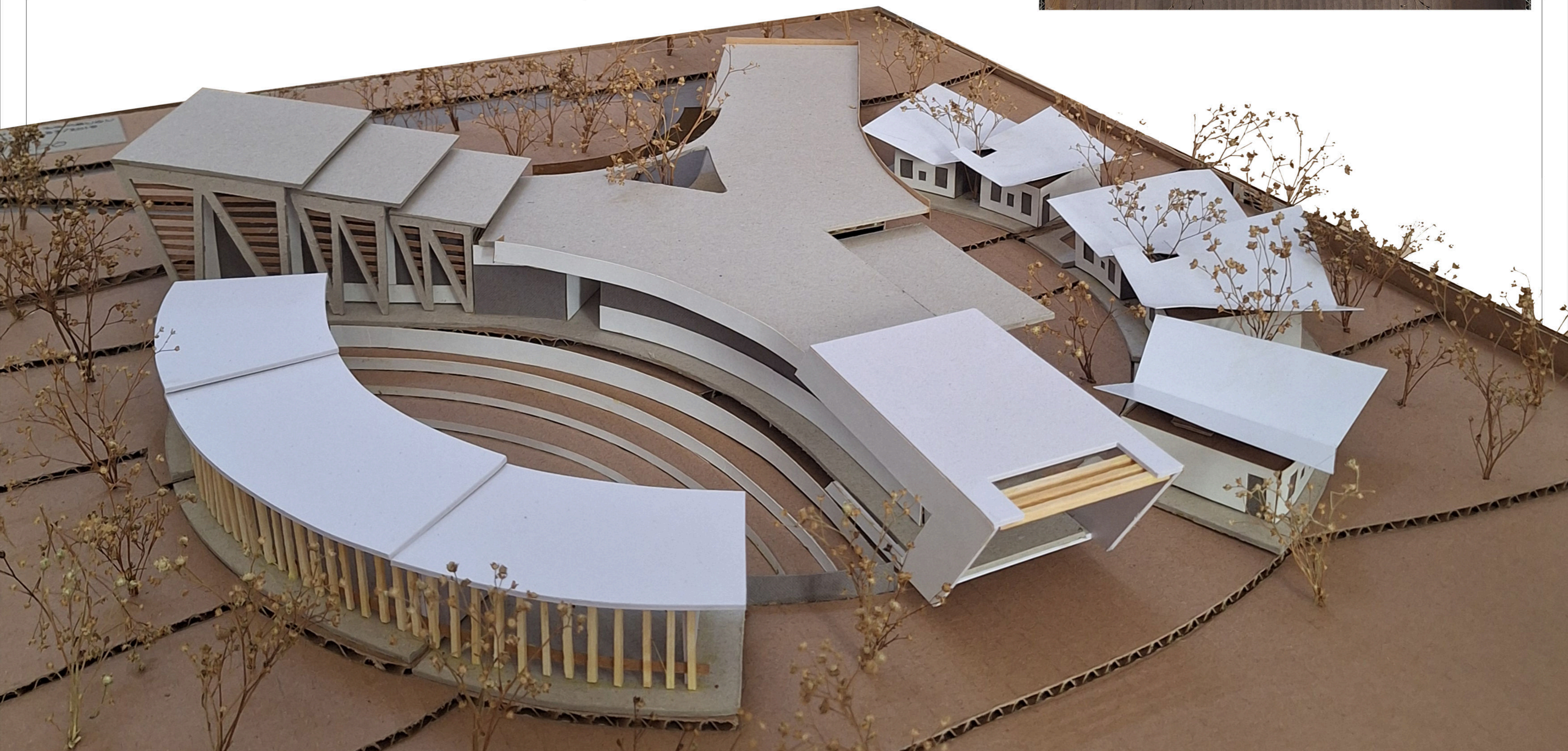
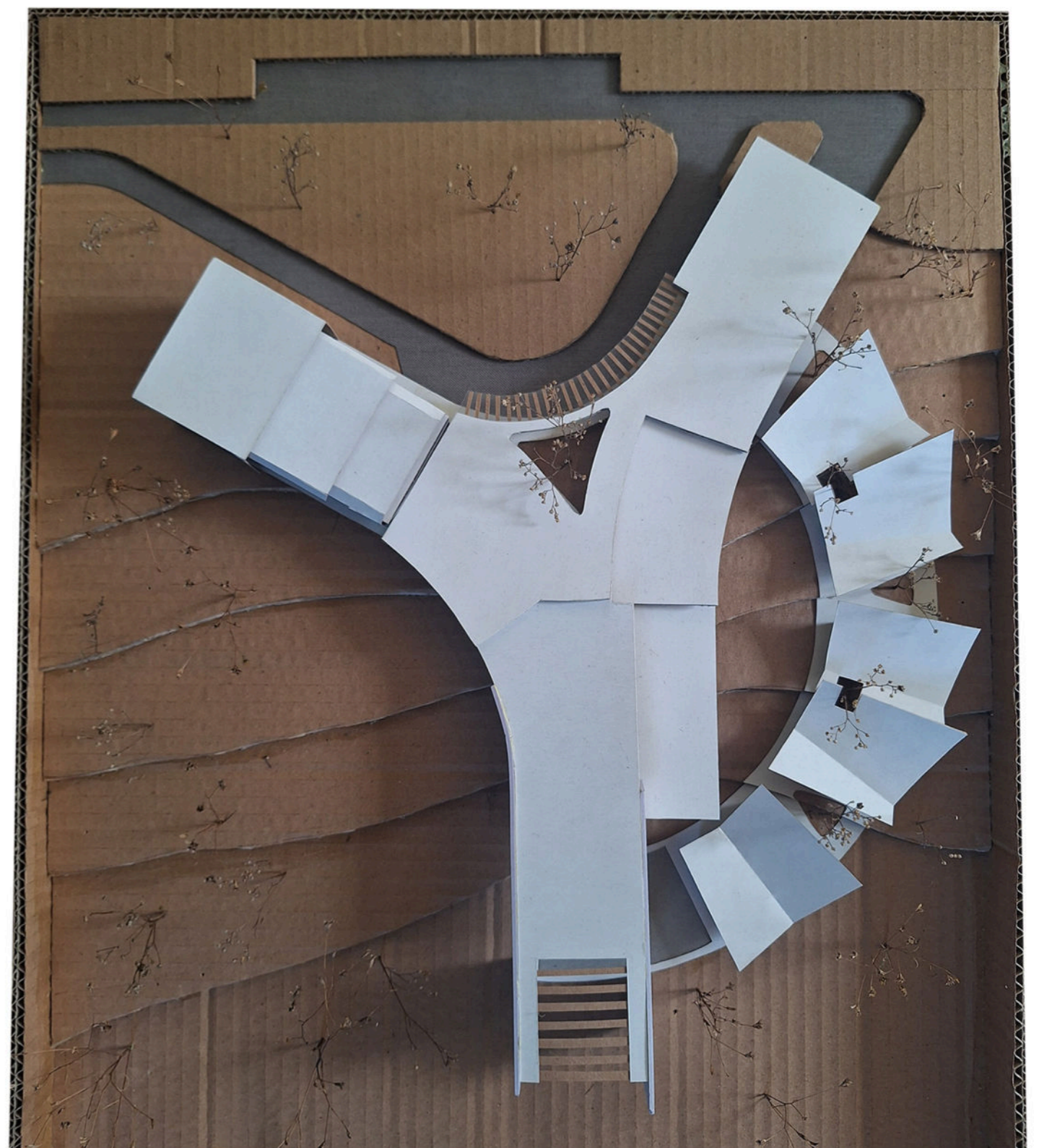
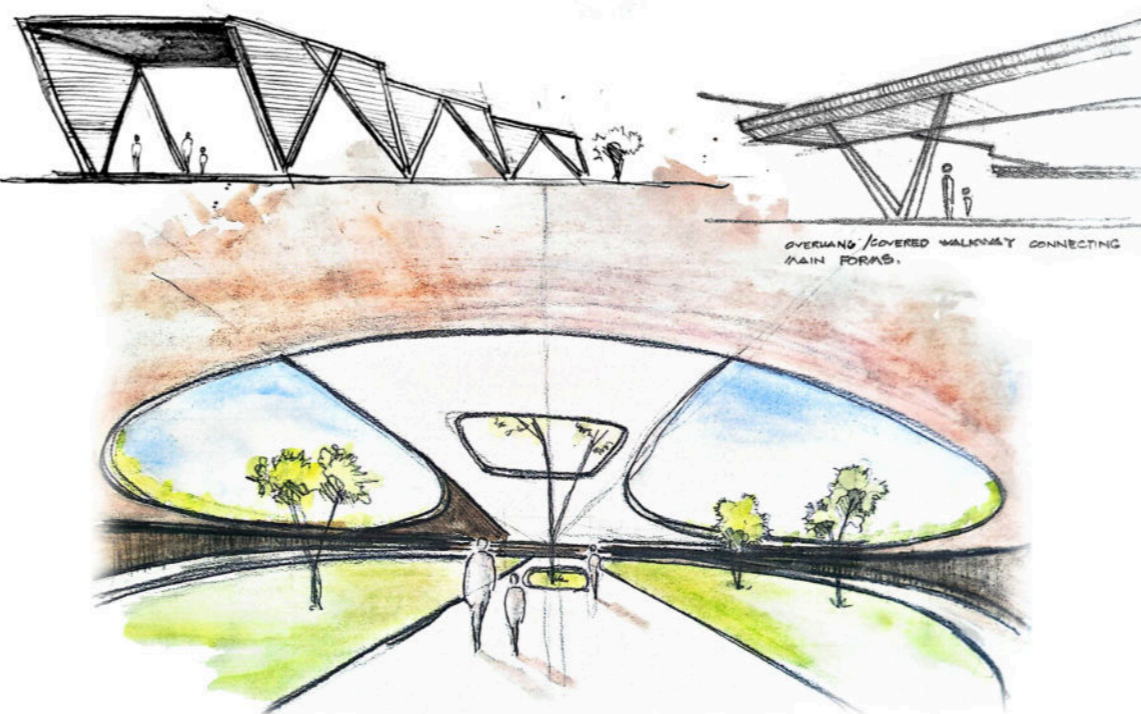
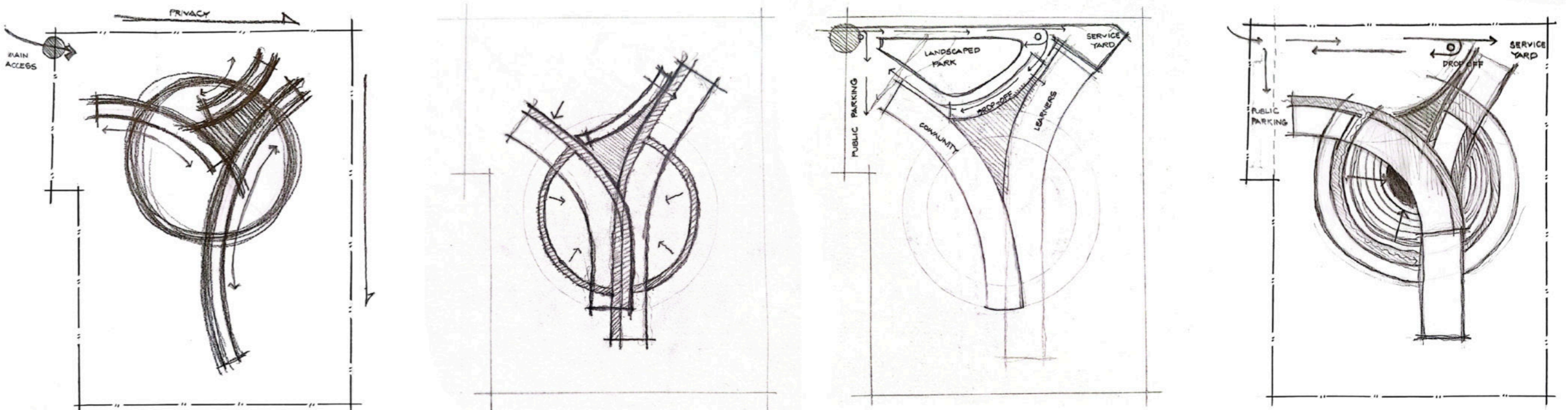
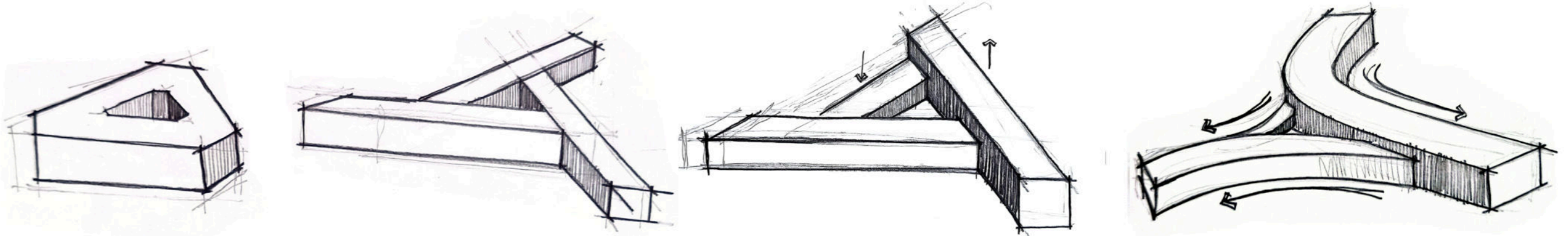
Inclusion of low windows, child-height counters, and playful nooks in spaces to promote independence and a sense of ownership.

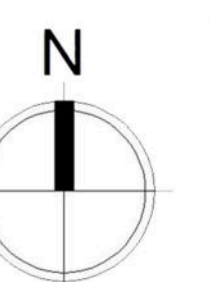
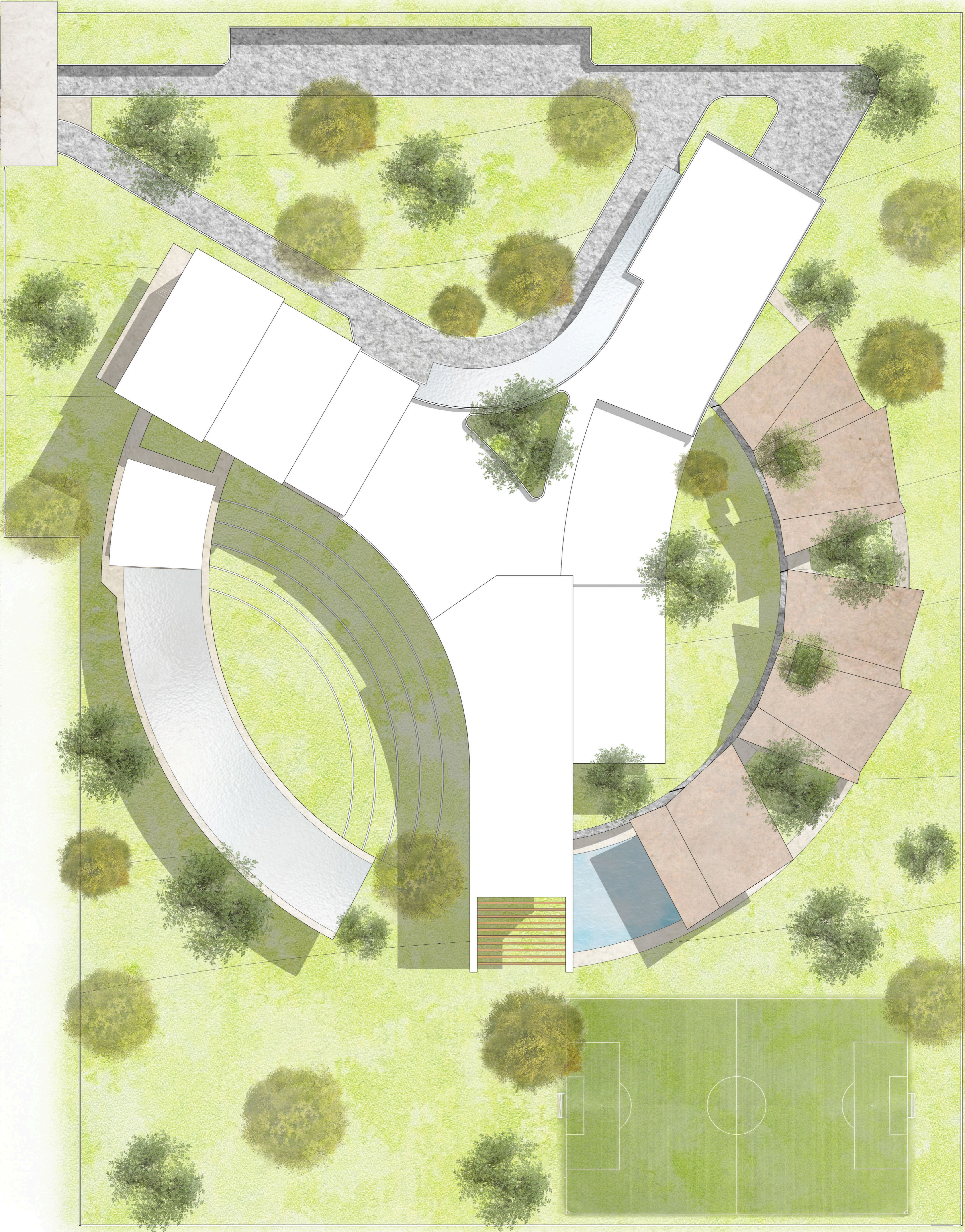
conceptualization

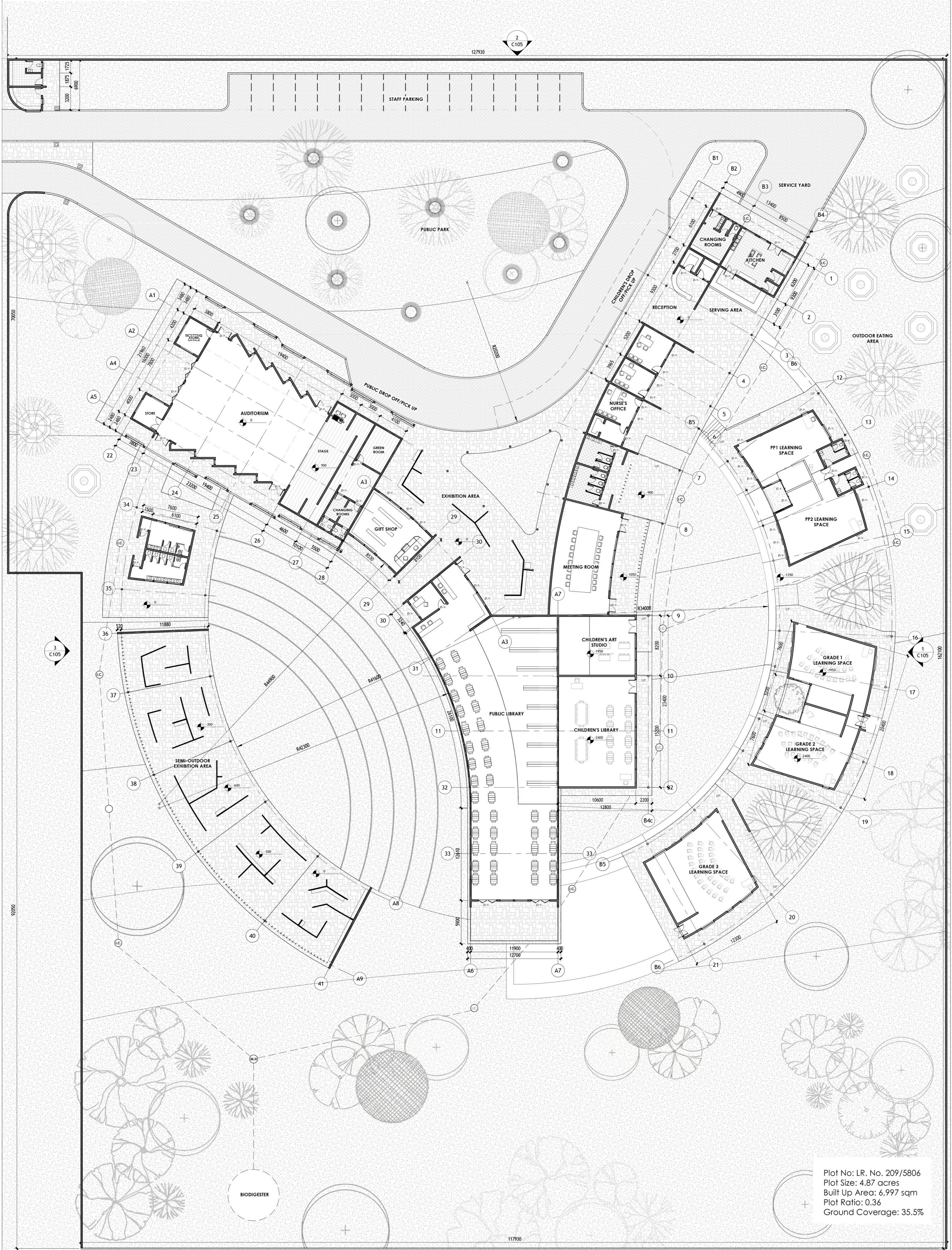
This ECD center is envisioned as a "village for learning." Rooted in the idea that a village is an encompassing ecosystem where we **live**, **work**, and **relate**, the design is structured around a tripartite form. Each wing represents one of these three vital human experiences, coming together to create a space where meaning is discovered and culture is naturally woven into the fabric of daily education.



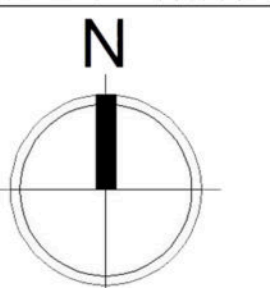
massing and form development







Plot No: LR. No. 209/5806
 Plot Size: 4.87 acres
 Built Up Area: 6,997 sqm
 Plot Ratio: 0.36
 Ground Coverage: 35.5%



SECTION 01

mizizi ecd center, Nairobi.

200mm wide, 300mm deep Reinforced concrete beam to Structural Engineer's details.

1100mm high masonry parapet wall with hoop iron on alternate courses, finished in 12mm plaster and paint.

300mm thick foundation block wall.

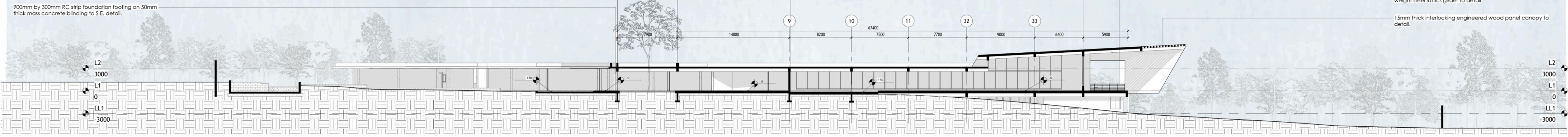
900mm by 300mm RC strip foundation footing on 50mm thick mass concrete blinding to S.E. detail.

200mm thick interior masonry block wall with hoop iron at alternate courses plastered and finished with 2 coats of approved paint by Architect

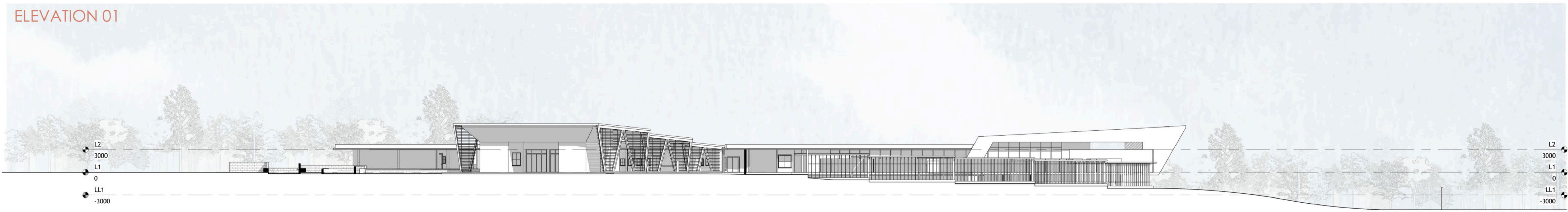
3mm thick mild steel casement window with Permanent Ventilation on top to schedule.

1000mm high guard rail, fixed onto 600mm deep light weight steel latices girder to detail.

15mm thick interlocking engineered wood panel canopy to detail.



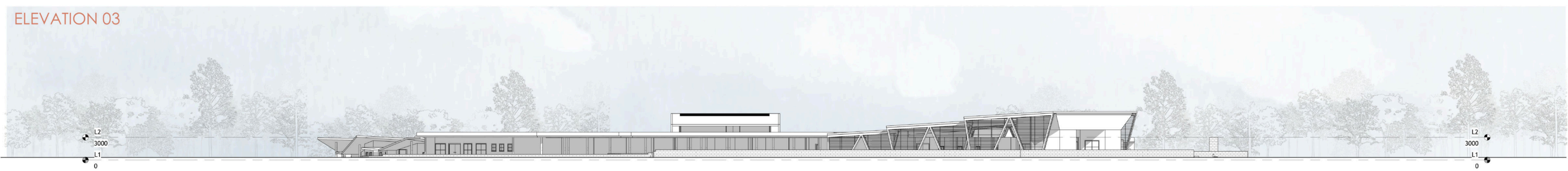
ELEVATION 01



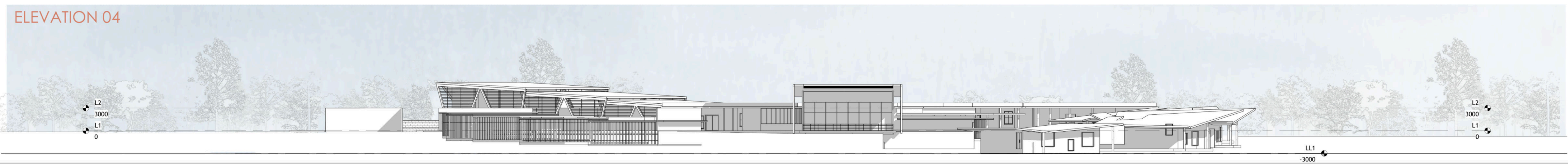
ELEVATION 02



ELEVATION 03

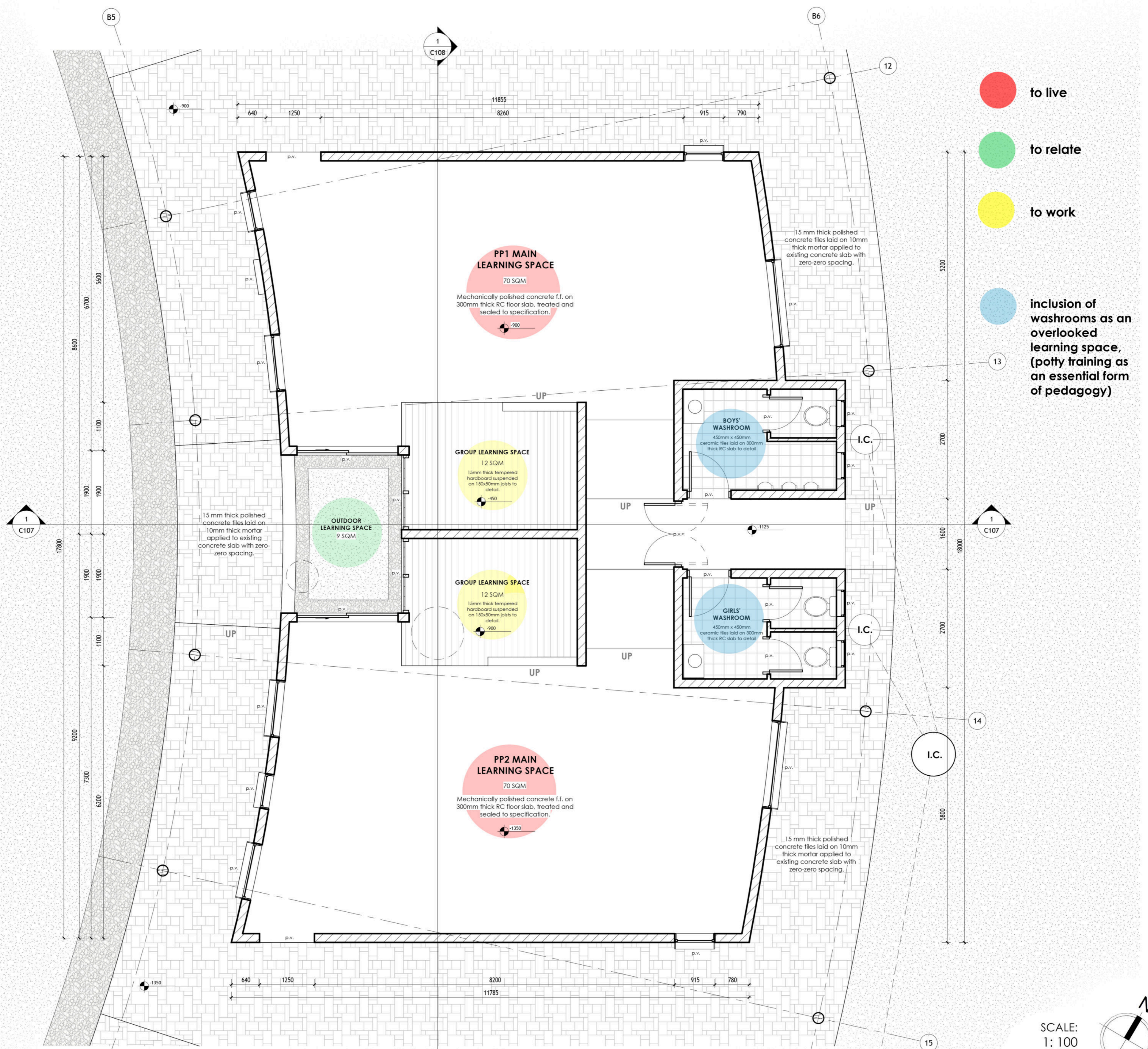


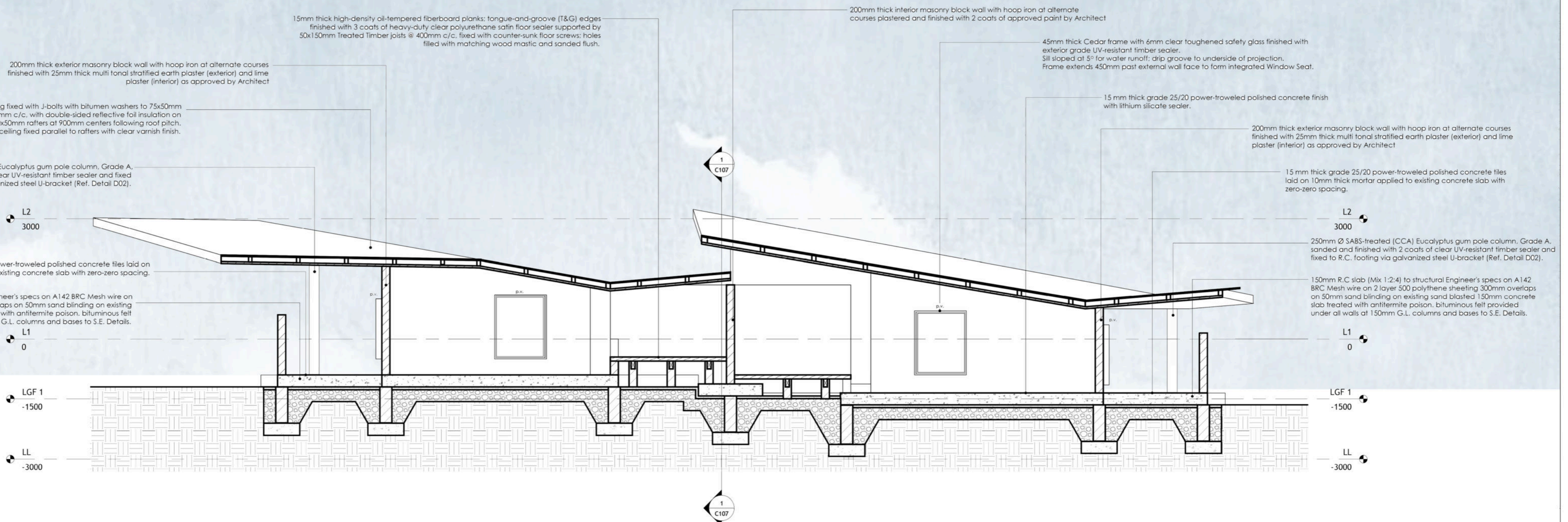
ELEVATION 04



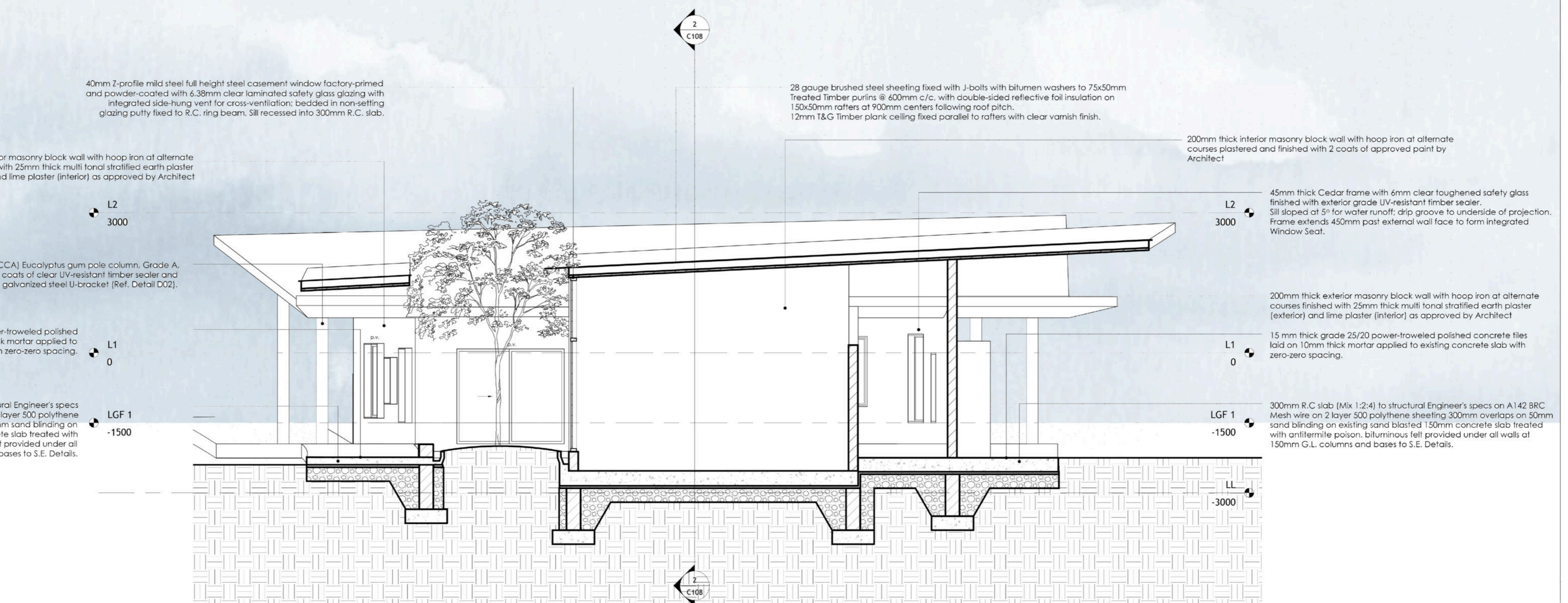


sample learning space, (2-4years)





1 Section 5



2 Section 7

