



Wajir County Referral Hospital

Location: Wajir
Project Value Kshs: 380 Million

Project Description

The New Accident and Emergency–Outpatient Building at the Wajir Referral Hospital responds directly to the harsh climatic conditions of northern Kenya while restoring order to the hospital’s evolving masterplan. The design re-establishes the original north–south grid that had gradually been lost over time, using orientation as the first strategy for environmental control. Surrounding the building is a protective outer wall that acts like a moulting skin, shielding the inner clinical spaces from direct sun while enabling passive cooling. This secondary envelope becomes an architectural language of large, monumental arches that rise beyond the internal floor levels, creating a sense of civic grandeur while deepening shade across the façade.

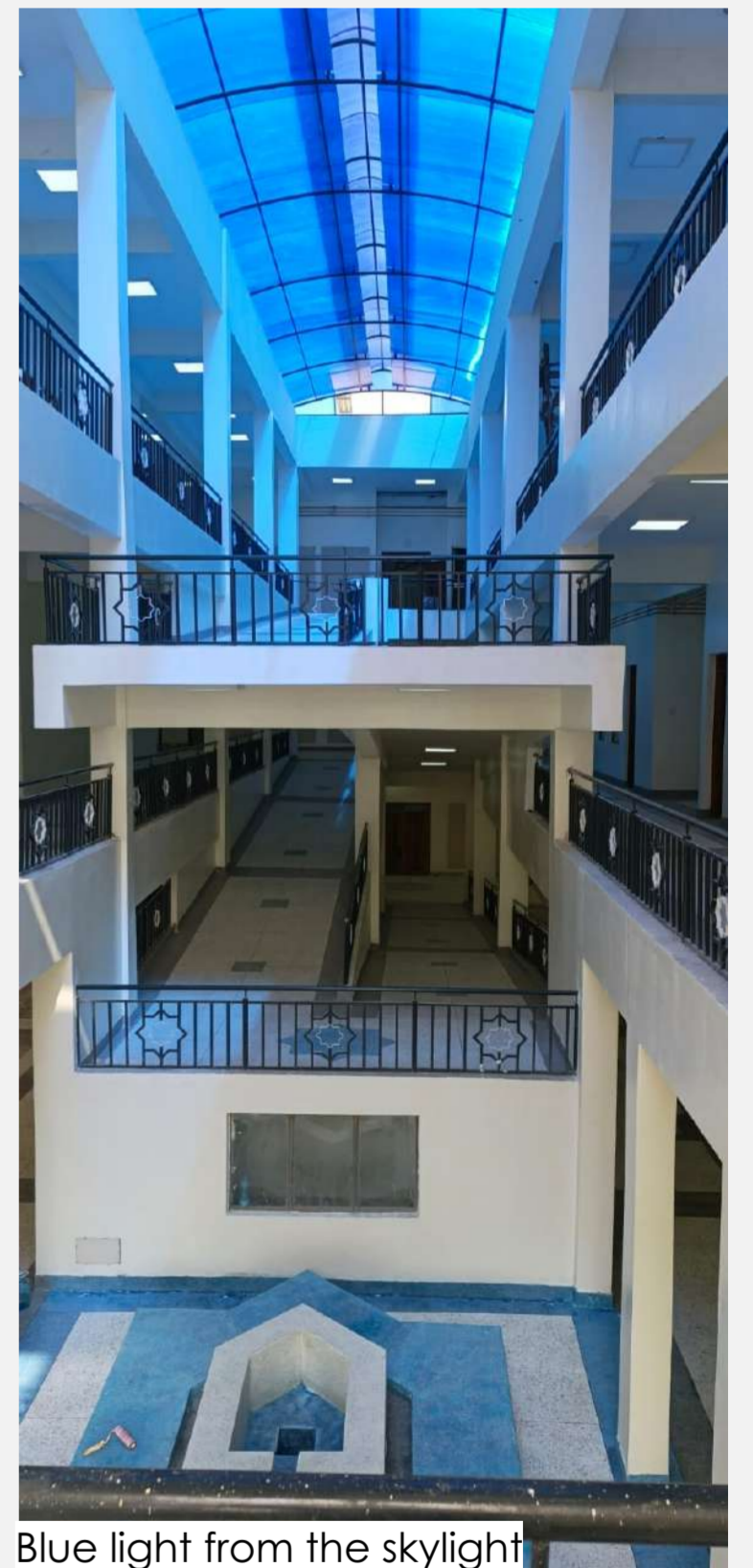
Within this protective layer, a sequence of courtyards emerges. These shaded outdoor rooms respond to the local culture where families accompany patients in large numbers, providing dignified spaces for waiting, gathering and rest throughout the day as the sun shifts. Entry into the building is marked by a generous 6-metre-wide thoroughfare framed by a two-and-a-half-storey arch, welcoming the public into a calm and shaded courtyard. At its centre, a fountain introduces the gentle sound and cooling mist of water, softening the hospital environment. Above, a blue-hued skylight washes the ramped circulation space with a cool grey-blue light, giving the courtyard a perceptible sense of relief from the surrounding heat.

From this central space the outpatient department opens directly, while accident and emergency functions maintain a separate and efficient public access. Above, the building organizes care vertically: the first floor houses four wards accommodating approximately fifty patients, while the second floor expands into critical care with a 12-bed ICU and a 12-bed HDU alongside three operating theatres and their support facilities. The third floor currently hosts service equipment while providing capacity for future expansion.

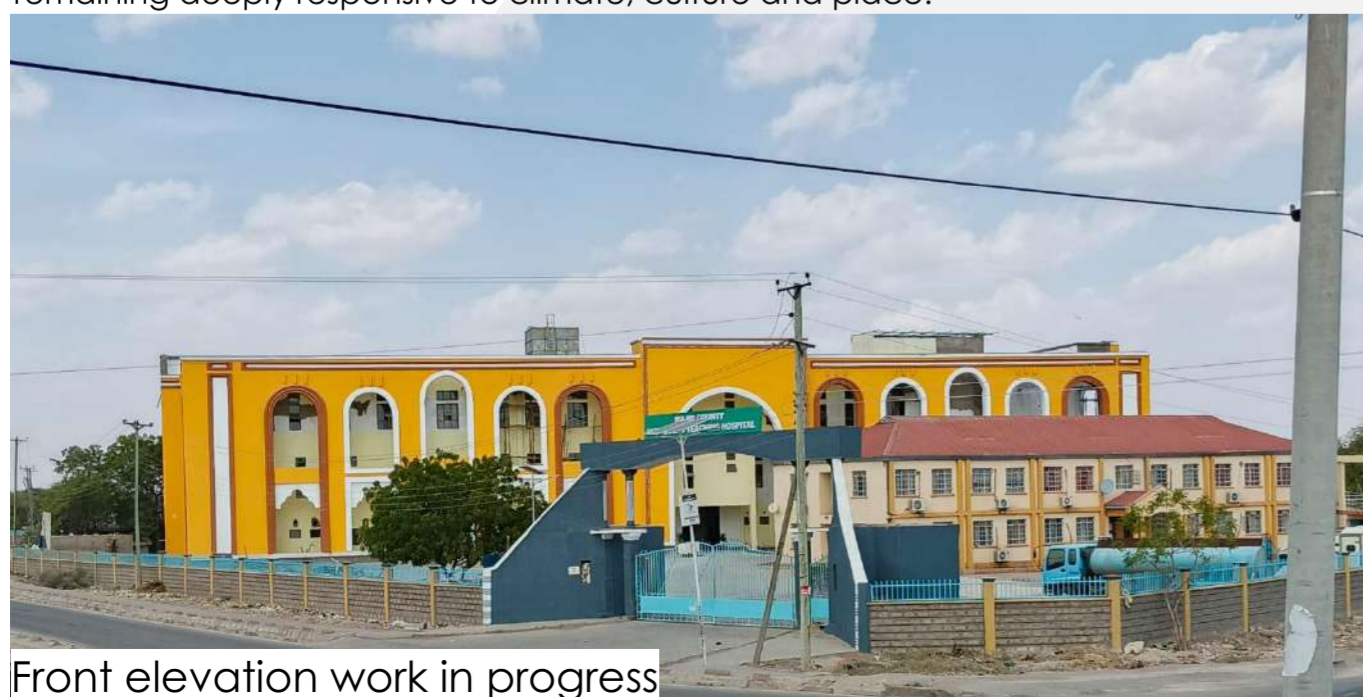
At ground level, a linking corridor reconnects the new facility to the existing hospital complex and its historic single-storey structures dating back to the Italian colonial era. Rather than overshadowing them, the new building acknowledges and respects this heritage. In doing so, it becomes the first step in a renewed masterplan for Wajir Referral Hospital—one that moves toward a more compact, vertical future while remaining deeply responsive to climate, culture and place.



Water fountain- intergrating nature



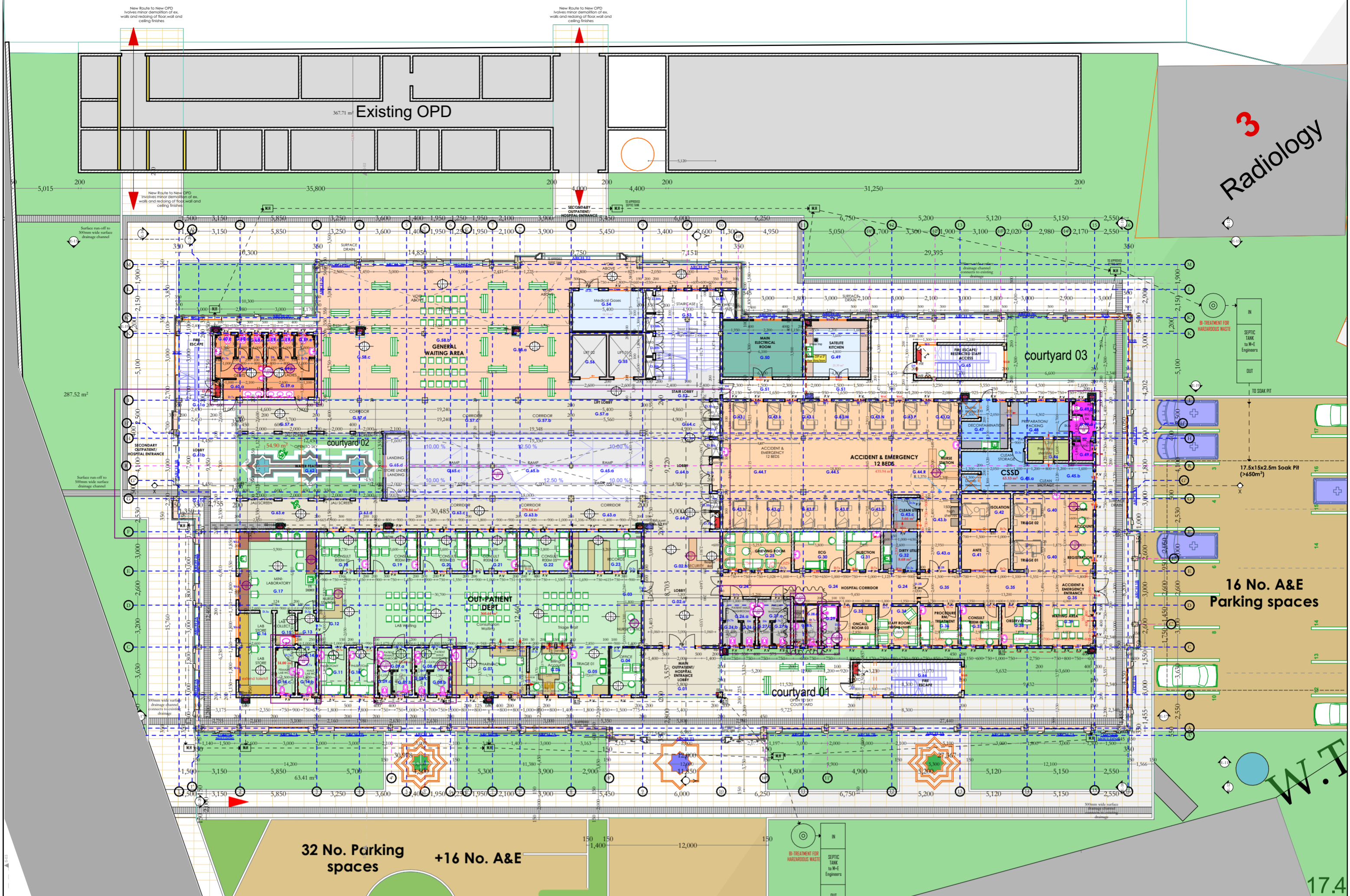
Blue light from the skylight



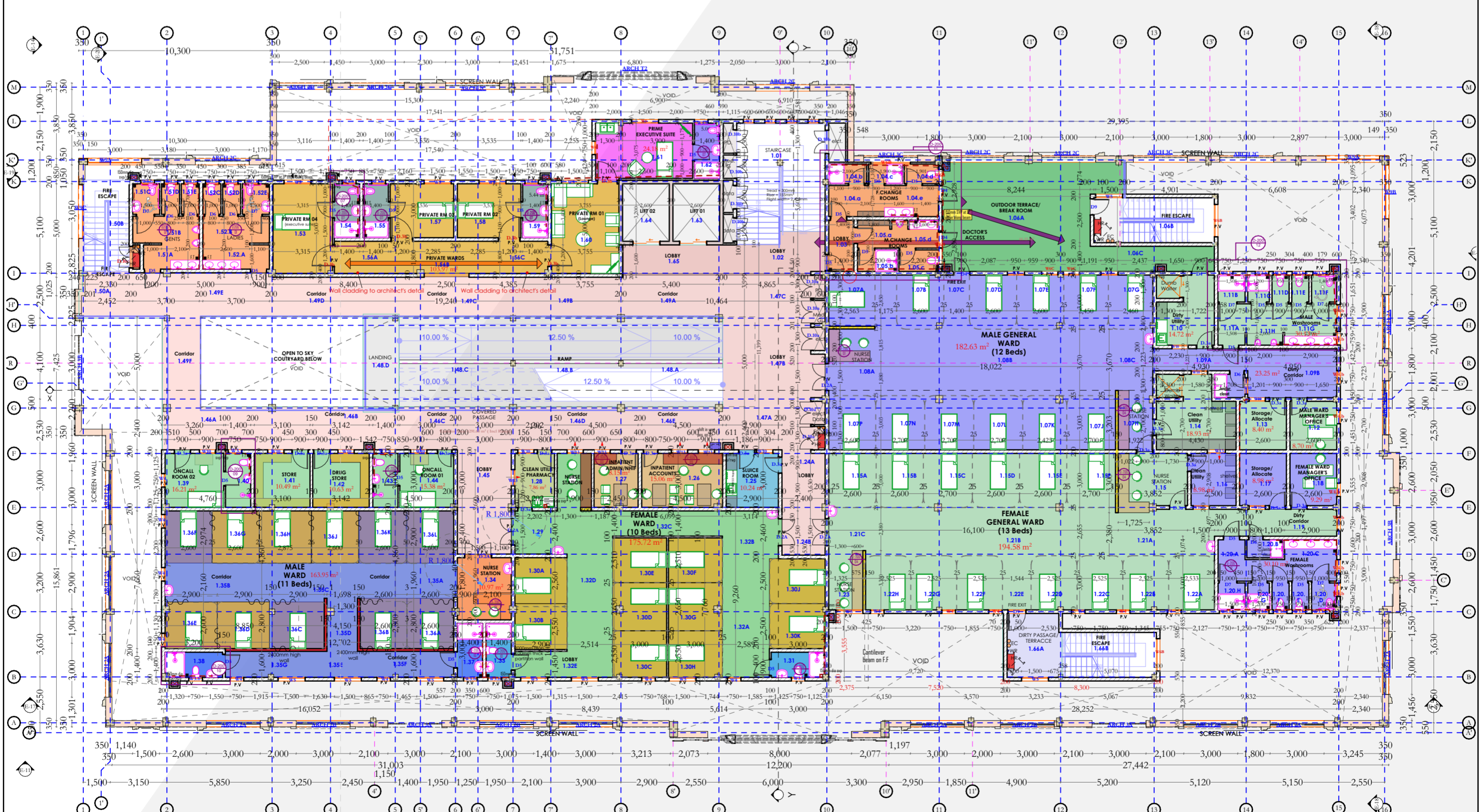
Front elevation work in progress



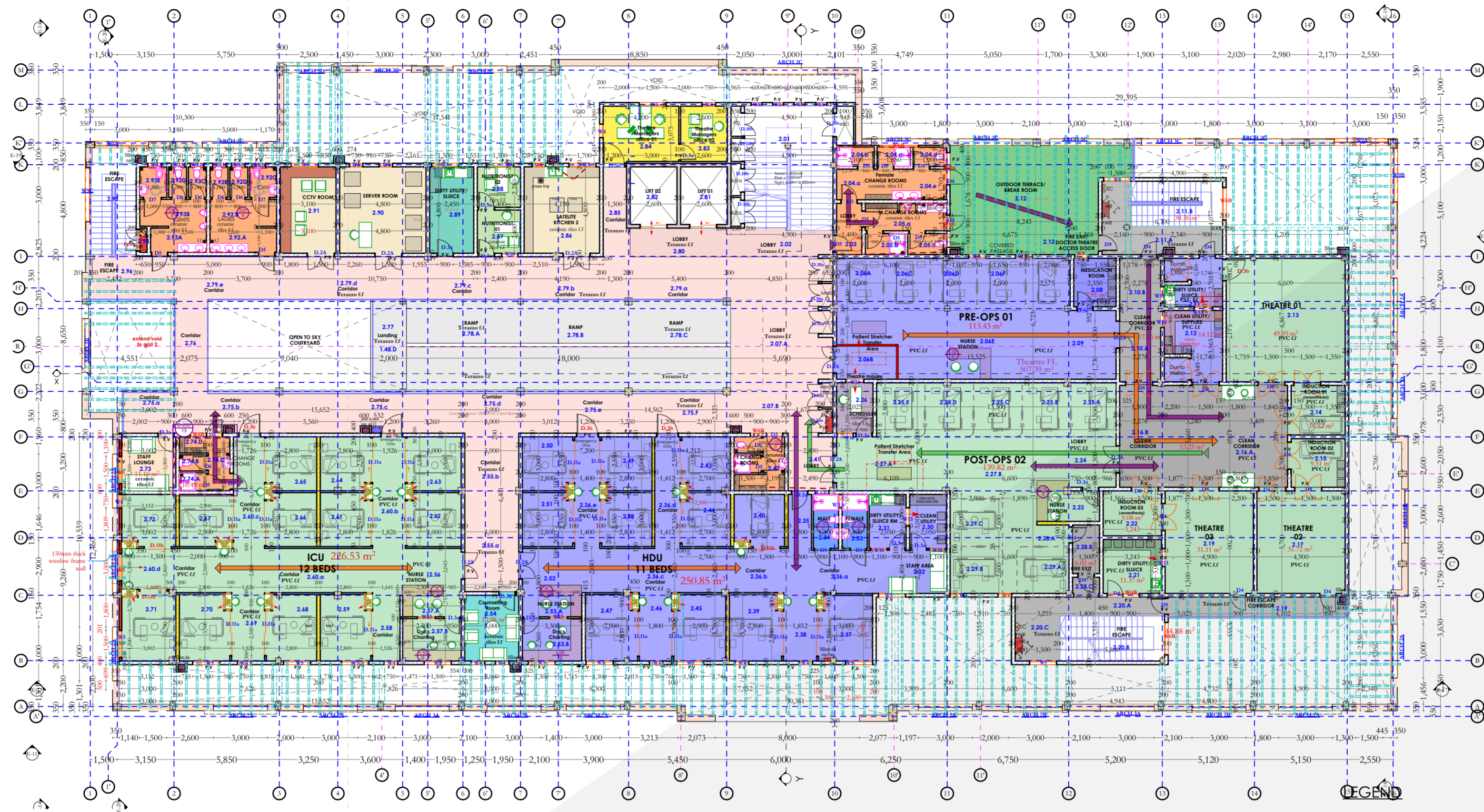
Front elevation work in progress



1:100 GROUND FLOOR PLAN



1:100 FIRST FLOOR PLAN



1:100 SECOND FLOOR PLAN



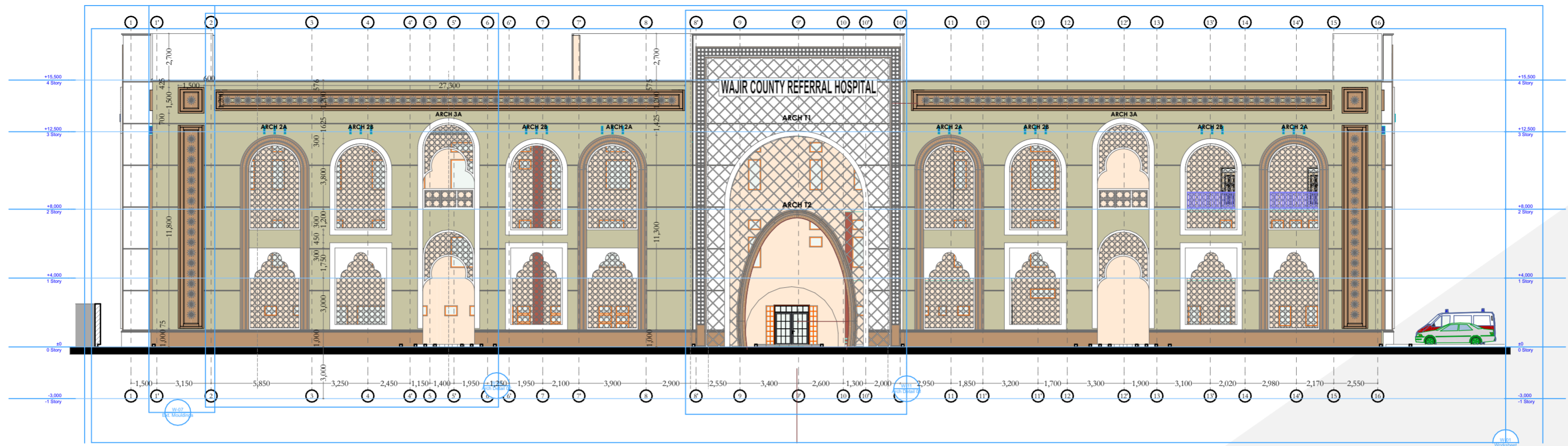
Right elevation work in progress



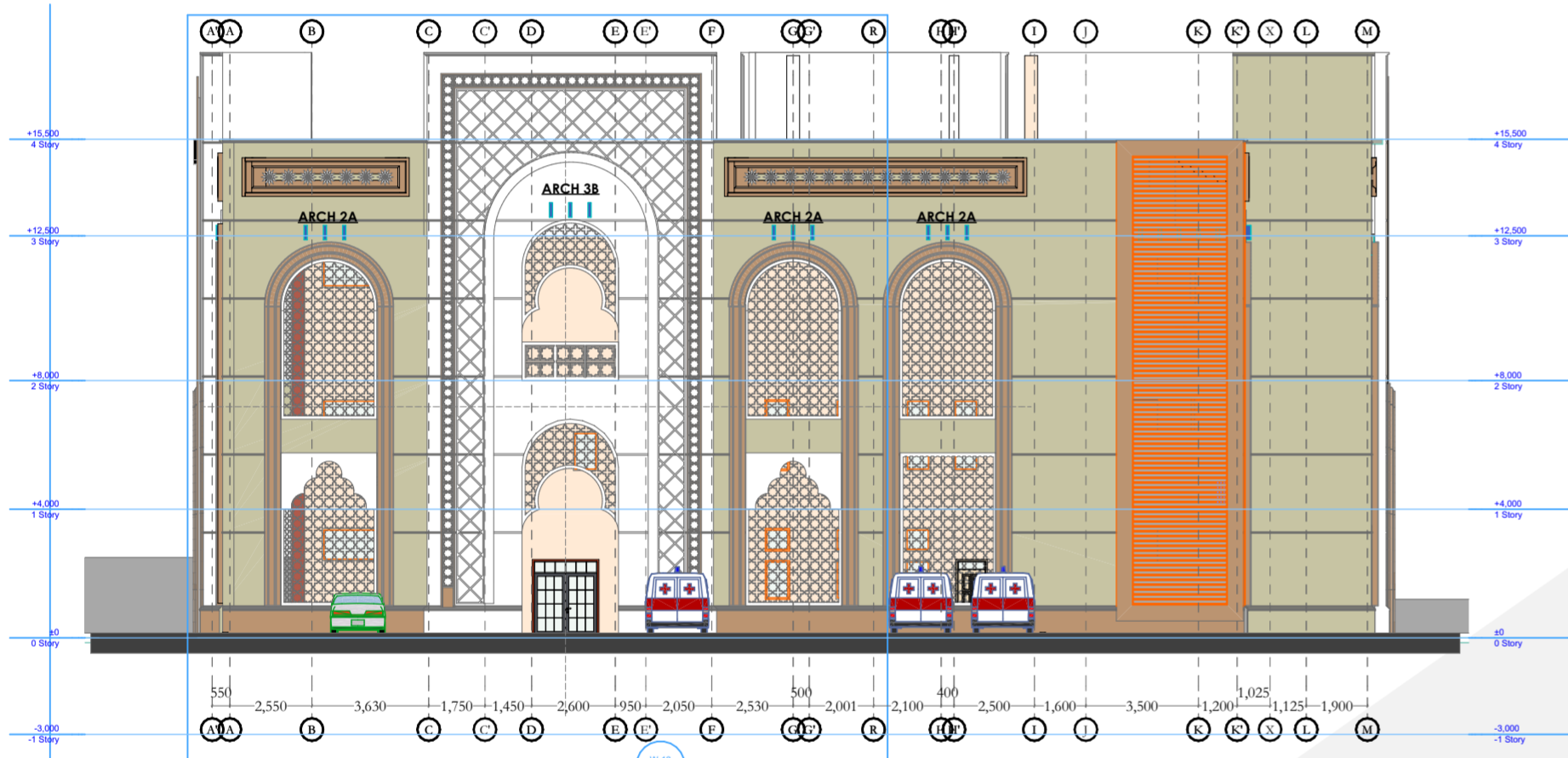
Front elevation work in progress



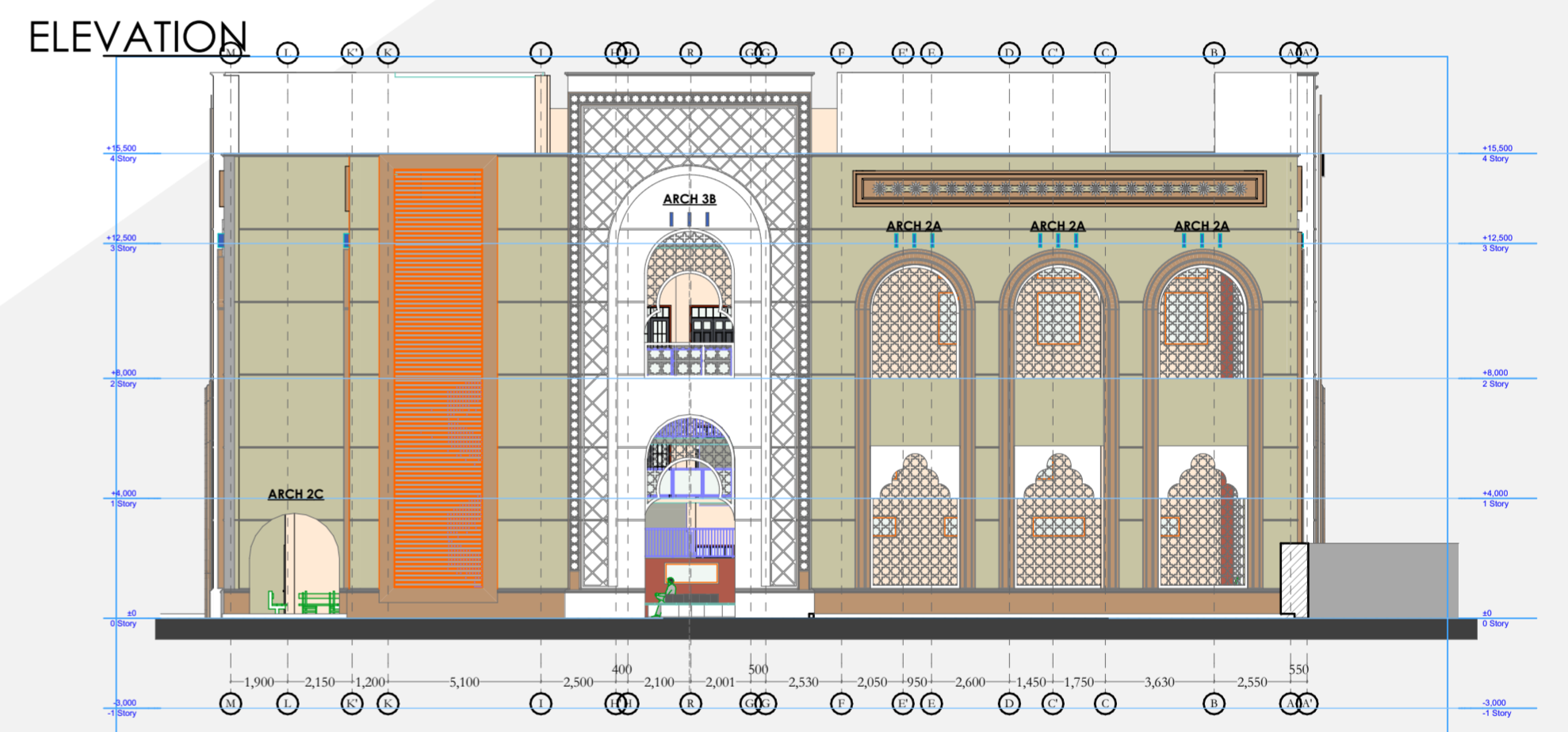
Beams over the courtyard between the walls



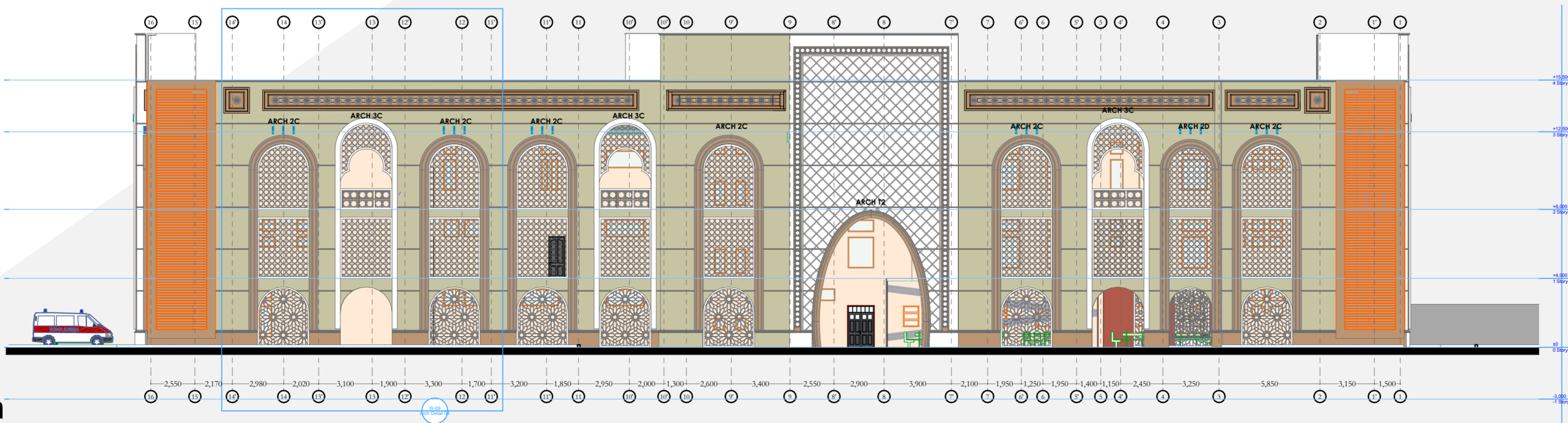
South Elevation



West Elevation



East Elevation



North Elevation



Rev 17.4

